



## Beagle Close

**£2,700 Per Month**

Cosway Estates are pleased to offer for rent this stunning spacious two double bedroom house located in secure gated development in Mill Hill East. This well-presented property has been finished to a hi-spec. The property comprises of fully fitted and integrated modern open-plan kitchen; spacious living room; two good size bedrooms and stylish bathroom. The property comes with a private rear garden. Situated close to Mill Hill East tube station (Northern Line) and close to the Waitrose supermarket and Virgin Active gym. AVAILABLE NOW. Viewings highly advised.

### Viewing

Please contact our Mill Hill Office on 02089590011 if you wish to arrange a viewing appointment for this property or require further information.



2



1

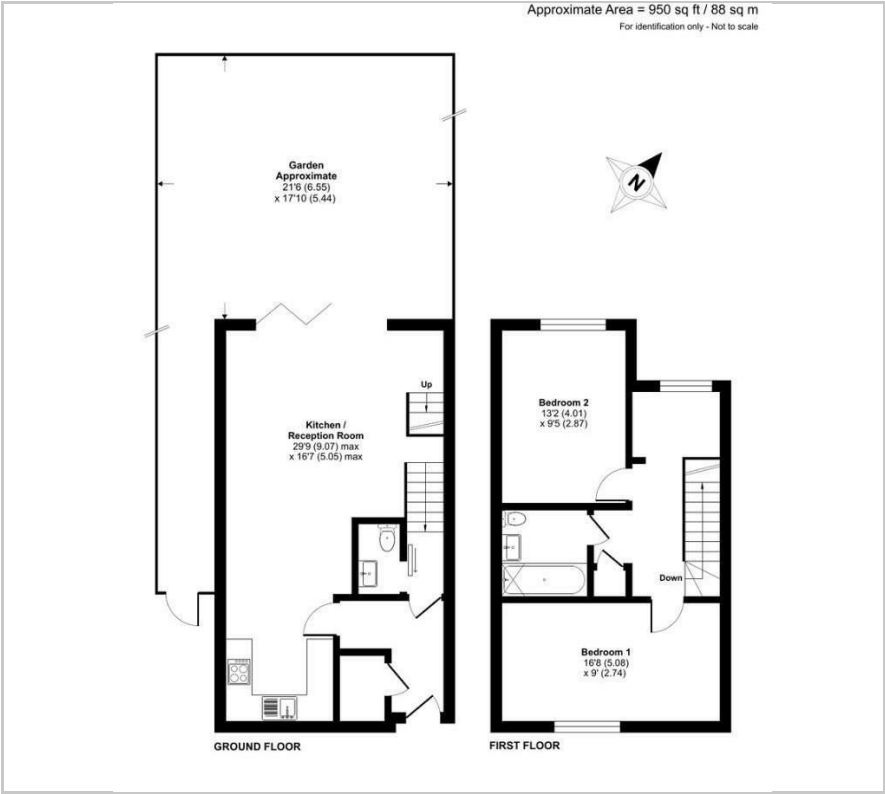


1

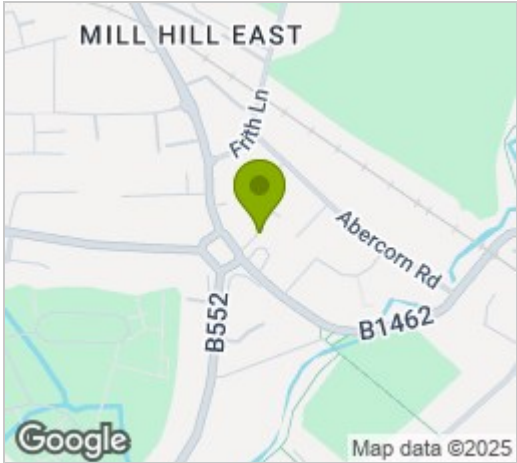


B

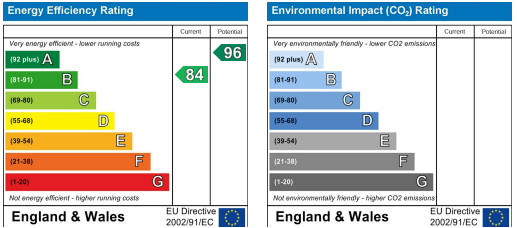
Floor Plan



Area Map



Energy Efficiency Graph



These particulars, whilst believed to be accurate are set out as a general outline only for guidance and do not constitute any part of an offer or contract. Intending purchasers should not rely on them as statements of representation of fact, but must satisfy themselves by inspection or otherwise as to their accuracy. No person in this firms employment has the authority to make or give any representation or warranty in respect of the property.